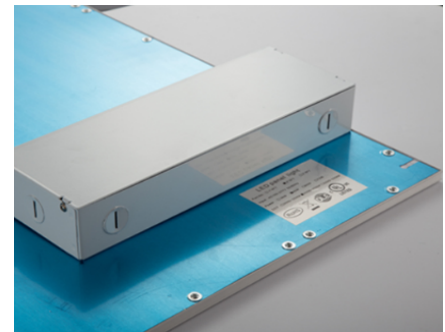


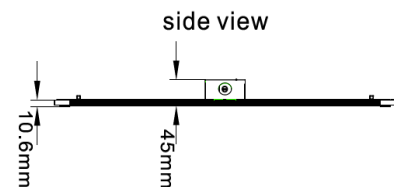
VLFP series
LED flat panel 1X4

CSA, cUL, cETL, or equal

Project Reference: _____ Fixture Type: _____ Cat. No.: _____ Voltage: _____ Options: _____



- Designed to fit T-Bar ceilings
- High performance and durability at an affordable price
- 115 lumens per watt, DLC qualified *
- Viewing angle: 120 degrees
- Durable aluminum frame, standard white or optional silver finish
- 120-277V, optional 347V is available, 0-10V dimmable



ORDERING INFORMATION

| Product Code | Wattage | Lumens | Dimensions | CCT | CRI |
|----------------------|---------|----------|-----------------------|-------|-----|
| VLFP-1X4-40W-40K-UNV | 40W | 4,600 lm | 11.8" x 47.75" x 0.4" | 4000K | 83 |

ACCESSORIES / OPTIONS

| Product Code | Description |
|--------------|--|
| 30K | 3000K option: replace "40K" in product code above with "30K" |
| 50K | 5000K option: replace "40K" in product code above with "50K" |
| VLFP-347 | 347V adder, order as separate item |

* Consult factory for current DLC product codes.